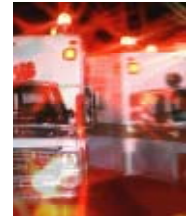


What is SPOT?

- Handheld satellite communication device
- Suite of safety and communication services
- Increase peace of mind & value for consumers



SPOT Satellite GPS Messenger



SPOT Services



Superior SPOT Technology

GPS Satellites Provide
Exact Coordinates
to SPOT



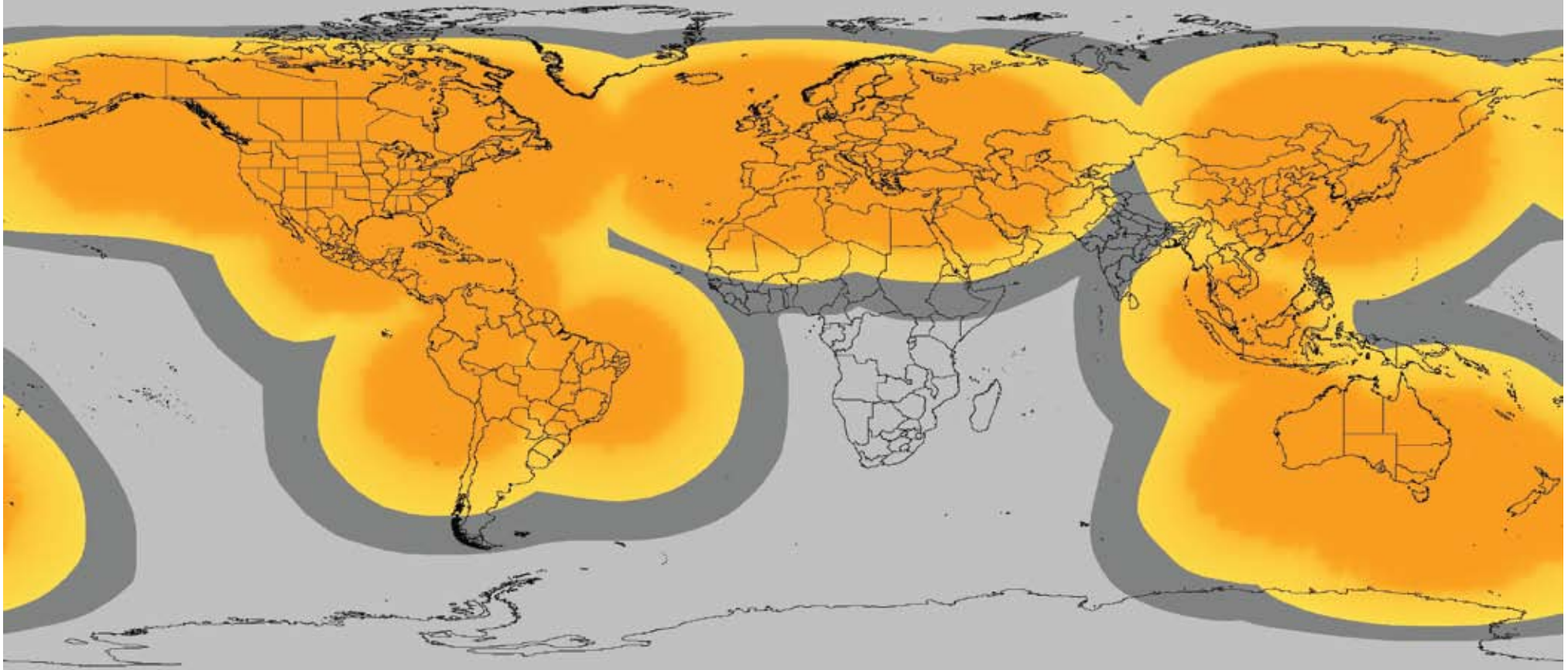
SPOT's small hand-held
design is easy to use in
and out of the car

Satellite Communication
Technology can send
messages from
virtually anywhere



SPOT SATELLITE GPS MESSENGER

SPOT Works from Virtually Anywhere



SPOT SATELLITE GPS MESSENGER



Distributed in Australia by: AffinityOne Pty Ltd 1800 438 238

NEW!

SPOT™

Satellite GPS Messenger

Includes all the same functionality as before — now in a smaller, more feature-rich form factor.

- **30% Smaller**
- **30% Lighter**
- **Faster GPS Acquisition**

New Features / Enhancements:

- Advanced GPS
- GPS acquisition light
- Custom message button
- Enhanced antenna performance
- Dedicated tracking button
- Improved tracking performance
- Safety covers over S.O.S. and Help buttons
- Replaceable button covers
- Illuminated buttons
- Message sent indicator light
- Includes armband case
- Recyclable packaging



Actual size.



Colors:

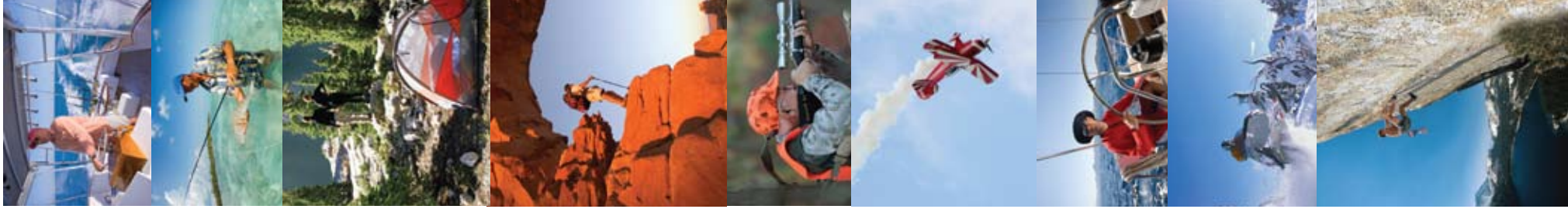


Orange

Silver



Center cutout provides easy access to function buttons



TECHNOLOGY

GPS Satellites:

21 ft (6.4 m) location accuracy

LEO Satellites:

1610-1620 MHz L-band frequency

Satellite Speed:

17,000 MPH

114 min. to circle earth

Distance:

876 miles (1414 km) above Earth

Altitude (twenty times closer than fixed satellites)

Requires less power

Less power usage allows more frequent updates

Less power usage allows other value-added uses

Visibility:

1 to 4 at any one time

More satellites for SOS detection than anyone

More satellites means signal can be detected sooner

Angle of Detection:

Constantly changing, helps in dense coverage

Beam Coverage:

Overlaps, increased detection probability

Movement:

Constantly, 8 planes 52° inclination

Communication:

If no GPS fix, SPOT sends distress signal without GPS position

to emergency response center

Previous Check In or Track Mode data provides

fast and close proximity

SPECIFICATIONS

Export Data:

CSV (spreadsheet), KML (Google Earth™), GPX (GPS data)

Certifications:

FCC, IC, WEEE: Outside of Case

SAR, RoHS, CEI313: Inside Case

Additional Specs:

-Size: 3.7" x 2.6" x 1.0" (9.4 x 6.6 x 2.5 cm)

-Wt: 5.2 oz (147.4 g)

-SOS Transmit: 5 min. intervals until batteries die, 1350

transmissions on fresh battery

-Help/SPOT Assist Transmit: 5 min. intervals for 1 hr

-Check In/Custom Message Transmit: three times within 20 min. -

only posts one

-GPS Lat. Lon. datum format: WGS-84

Operating Environment:

Temperature: -22°F to +140°F (-30°C to +60°C)

Altitude: -328 ft to 21,325 ft (-100 m to +6500 m)

Humidity: MIL-STD-810F Method 507.4 95% to 100% condensing

Salt Fog: Per MIL-STD 810E Method 509.3, 5% NaCl, 95% distilled water

Vibration: Per SAE J1455: Random, 20 Hz to 2000 Hz, 0.04g_1/Hz

Water Proof: 16.4 ft (5 m) submersion for 1 hour

Buoyant: Yes

Power:

Batteries: 3 AAAA lithium

Transmission Power: 0.16 Watts

Standby mode: 110 days

LEDs:

On/Off

OK/Check

Message

Track

SOS

Help

GPS Acquired

Message Sent

FEATURES



S.O.S.: Emergency assistance request sent with your GPS location to GEOS every 5 min until batteries die or until cancelled



Help/SPOT Assist: Request help from friends and family every 5 min for 1 hour. Up to 10 contacts – phone & email



Check In: Lets contacts know where you are and that you're okay. Attempts to send three messages to help ensure successful transmission. Up to 10 contacts—phone & email. Contacts will receive only 1 message



Custom Message: Create custom non-urgent message to send to friends and family



Track Progress: Acquires your GPS location every 10 minutes for 24 hours. Sends each location one time. Previous 2 track points sent with current track point helping ensure consistent recording of movements

Emergency Response Center:

GEOS is operational 7 days/wk, 365 days a year, operating out of Houston, Texas (2 addl. backup locations)

History Review:

Review all Check In, Track, Alert SOS, and Help locations via findmespot.com using Google Maps for up to 30 days

Shared Page:

You can share messages and locations with others via a personal shared page (optional password protection) or SPOT Adventures account at www.spotadventures.com. Live data viewing up to 7 days, data storage in account up to 30 days. Can have up to 10 shared pages

Button Covers:

Prevent accidental activation of SOS or Help features

GPS Signal Indicator:

Visual LED status of GPS signal acquired

Message Sent Indicator:

Visual LED status of message sent

Security:

Data protection via the latest techniques. 3rd party penetration testing two times/yr by PlynT.com VeriSign certificate (Share Page & Login Site) Latest security patches updated quarterly Network has firewalls and port scanning

Removable Case:

Flexible attachment solution providing Arm Band, Carabiner & Car Dash attachment. Reflective material

International Communication:

Universally accepted icons to communicate button features

Color:

Orange and silver

Replaceable Button Covers:

One set included

SPOT Feature Comparison Chart

FEATURE	SPOT 1 AVAILABILITY	SPOT 2 AVAILABILITY
Colors	Orange	Orange, Silver
Standby Mode	365 days	94.7 days
Check In / OK (3x every 5min for 15min)	Yes (650 max)	Yes (350 max transmissions)
Help (5min for 1hr)	Yes (1950 max)	Yes - with Button Cover (1350 max)
Emergency (5min until battery dies)	Yes (1950 max) 7 days	Yes - with Button Cover (1350 max) 4.7 days
Tracking (10min for 24hrs)	Yes (1950 max) 14 days	Yes - Independent Button (850 max) 6.0 days
Replaceable Help/Emergency Button Covers	No	Yes
GPS LED Indicator	No	Yes
Message Sent LED Indicator	No	Yes
Additional Message Button	No	Yes
Tracking Message Queuing	No	Yes
Universal ICON's	No	Yes
Zip Tie Slots	No	Yes
Standard Carrying Case	Optional, not included with unit	Arm band included with unit
Carabineer	No	Yes
Ergonomic Grip	Yes	Yes

SPECS

Weight	7.37 oz	5.2 oz
Size	4.38" x 2.75"x1.75"	3.7" x 2.6" x 1"
GPS Chipset	Nemerix NB1030	uBlox AMY-5M
	Channels=16	Channels=50
	Correlators=64	Correlators=1 million
	Almanac Data needed=Yes	Almanac Data Needed=No
	Calibration needed if not used in 2wks	No need for calibration
	Calibration needed if moved >600miles	No need for calibration
GPS Acquisition	<1 to 15min	≤ 1Min typical
Antenna	Spectrum	Axon
	Ceramic Material	Rogers Material
	1/4" thick / heavy	1/16" thick / light in weight
	-->	Increased low angle gain / better received gain characteristic
	-->	Upward gain is decreased from 1.5 to 0 db
	-->	Improved radiation pattern by slanting the RF energy for better GPS capture when unit is on arm
Power	2 AA Lithium	3 AAA Lithium

ID	Spot20 - Orange unit (UPC 893049001219)
ID	Spot2S - Silver unit (UPC 893049001240)

SPOT SATELLITE GPS MESSENGER



Distributed in Australia by: AffinityOne Pty Ltd 1800 438 238



ASK FOR HELP/ SPOTAssist

Request help from your friends and family at your GPS location.



CHECK IN

Let contacts know where you are and that you're okay with a pre-programmed message.



CUSTOM MESSAGE

Additional message button to let contacts know where you are, and send a pre-programmed message



TRACK PROGRESS

Automatically send and save your location and allow contacts to track your progress using Google Maps™ in real time.



SOS

Alert emergency responders to your GPS location.



SPOT SATELLITE GPS MESSENGER



Check/OK Function

Let contacts know where you are and that you're OK.



Use this feature to let your contacts know that all is well, notify them of your location, or send and save a single waypoint so you can review your route at a later date. Your contacts will receive text messages or email with a link to Google Maps™ with your GPS location.

SPOT SATELLITE GPS MESSENGER



NEW

S.O.S. Function

Notify the emergency rescue coordination center of your GPS location.



S.O.S.

Use this function in the event of a life threatening or other critical emergency. The GEOS Rescue Coordination Center notifies the appropriate emergency responders based on your location and personal information – which may include local police, highway patrol, the Coast Guard, your country's embassy or consulate, other emergency response centers, or search & rescue teams.

NEW

Safety cover over button helps prevent accidental emergency alerts.

SPOT SATELLITE GPS MESSENGER

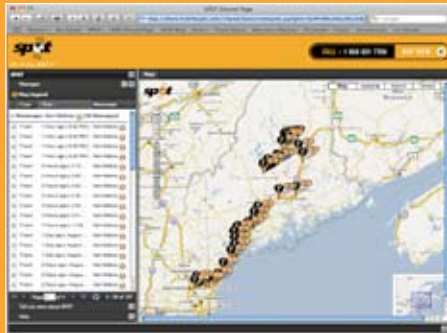




NEW

Tracking Function

Send and save your location and allow contacts to track your progress in real time using Google Maps™.



GPS Tracking with Google Maps™.



Use this feature to send and save your location. Friends and family can view your tracks in near real-time on Google Maps™. You can also use this feature to save waypoints so you can view your full route at a later date. Track Progress messages are sent every 10 minutes. (Note: additional service fees may apply.)

NEW

Now separate tracking button for enhanced usability. In addition, enhanced message queuing.

SPOT SATELLITE GPS MESSENGER





NEW

Help Function

Ask family and friends for help -



Use this option in the event of a non-life threatening situation to notify others that you need assistance. Even if SPOT cannot acquire its location from the GPS network, it will still attempt to send a distress signal – without GPS location.



NEW

Safety cover over button helps prevent accidental emergency alerts.

SPOT SATELLITE GPS MESSENGER





NEW

Custom Message Function

Send a custom message to family and friends.



Use this feature to let your contacts know that all is well, notify them of your location, or send and save a single waypoint so you can review your route at a later date. Your contacts will receive text messages or email with a link to Google Maps™ with your GPS location.

NEW

Additional custom message button.

SPOT SATELLITE GPS MESSENGER





NEW

GPS Fix & Message Sent Lights

GPS



NEW

Improved usability - New lights indicate GPS Fix and Message Sent on unit.

SPOT SATELLITE GPS MESSENGER



SPOT Service with Pricing Overview

BASIC SERVICE PLANS

\$115 USD Annual Service Fee: Paid Online

Service subscription includes unlimited messaging of the following:

- Alert 9-1-1
- Check-in
- Help

ADDITIONAL RECOMMENDED SERVICES

Track Progress

\$49.99 yearly service fee

Allows users to send and save your location and allows contacts to track your progress using Google Maps™.

GEOS Search and Rescue Benefit Upgrade

\$12.95 USD Per Year at time of activation (\$150 per year afterwards)

Provides up to \$100,000 of additional private search and rescue resources, including helicopter extraction around the world and reimbursement benefits for any emergency service expenses incurred.



SPOT SATELLITE GPS MESSENGER

spot ADVENTURES

EVERY DAY IS AN ADVENTURE. SHARE YOURS.

SHARE TRACKS, STORIES, PHOTOS AND REAL-TIME UPDATES OF YOUR ADVENTURES WITH FRIENDS, FAMILY AND OTHER SPOT USERS.

SPOT Adventures is the free online community where you can share your outdoor experiences easily and in real-time via our SPOT Live Map using Google Maps™. With your SPOT adventure account you can easily save your adventure map, add photos, and a personal story. Each saved adventure is like a trip diary for you to keep and share with friends.

LIVE MAP



Create an adventure for all to view. Stream your shared page Live into your account.

PHOTOS



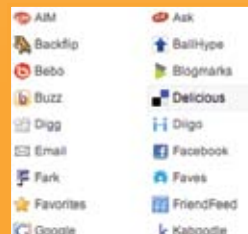
Upload your photos and geotag them to your adventure map.

BLOG



Provide a description of your adventure to enhance your story.

SOCIAL



Use the latest social tools like Facebook and Twitter to share your adventure.

SPOT SATELLITE GPS MESSENGER

